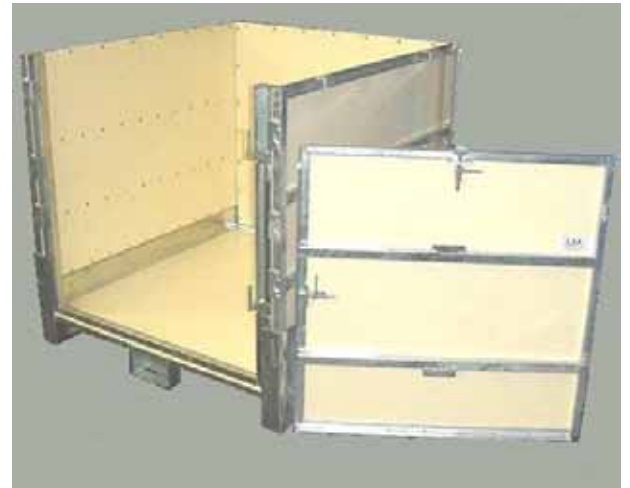


MULTICON™ SC

1 CUBIC METRE SECURITY CONTAINER



- SECURITY LOCKABLE
- USES - SECURITY FOR ALL PRODUCTS
- FULLY FOLDBACK AND REMOVABLE FRONT DOOR
- 4 WAY ACCESS PALLET SUITABLE FOR SCISSOR & FORK LIFTS
- ALL PANELS EASILY REMOVED FOR CLEANING
- LOCATING CLEATS FOR POSITIVE STACKING
- STACKING HEIGHT ASSEMBLED – 5, FOLDED – 10
- CAPACITY TOTAL – 1040 LITRES (1.04 M3)
- CONSTRUCTION – GALVANISED FRAME, HEAVY DUTY STEEL PALLET, POLYPROPYLENE PANELS
- TARE CONTAINER WEIGHT – 148 KG
- DIMENSIONS – 1102 WIDE X 1172 DEEP X 1103 HIGH (354 HIGH FOLDED)
- INTERNAL DIMENSIONS – 1021 WIDE X 1091 DEEP X 944 HIGH

Sydney, Australia
+61 2 9525 8544
www.technosearch.biz



TECHNOSEARCH